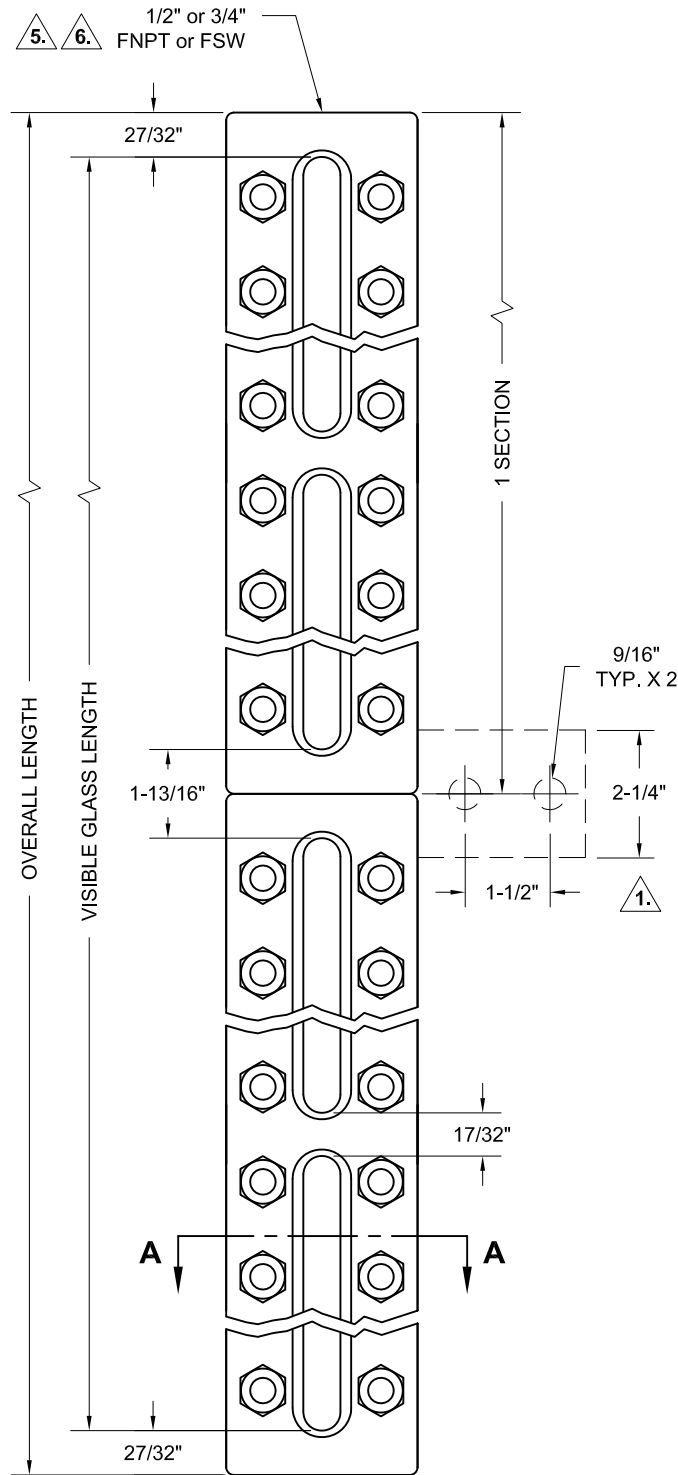


REVISIONS			
Rev.	Modification	Date	Done By



Sections & Size	U-bolts	Nuts	Overall Length (in.)	Visible Length (in.)	No. of Sect.	Glass Size	Wgt. ¹⁵ (lbs.)	Minimum Vessel Centers Off Valves with NPT Gauge Connections ²	
								With Rigid Valves	With Union Valves
								111	6
112	7	14	13	11-1/4	1	12	20	17-3/32	19-19/32
113	8	16	14	12-1/4	1	13	21	18-3/32	20-19/32
115	9	18	16	14-1/4	1	15	24	20-3/32	22-19/32
118	10	20	19	17-1/4	1	18	29	23-3/32	25-19/32
120	12	24	21	19-1/4	1	20	32	25-3/32	27-19/32
211	12	24	24-1/8	22-3/8	2	11	36	28-3/16	30-11/16
212	14	28	26-1/8	24-3/8	2	12	39	30-3/16	32-11/16
213	16	32	28-1/8	26-3/8	2	13	43	32-3/16	34-11/16
215	18	36	32-1/8	30-3/8	2	15	49	36-3/16	38-11/16
218	20	40	38-1/8	36-3/8	2	18	57	42-3/16	44-11/16
220	24	48	42-1/8	40-3/8	2	20	64	46-3/16	48-11/16
311	18	36	36-1/4	34-1/2	3	11	54	40-9/32	42-25/32
312	21	42	39-1/4	37-1/2	3	12	59	43-9/32	45-25/32
313	24	48	42-1/4	40-1/2	3	13	64	46-9/32	48-25/32
315	27	54	48-1/4	46-1/2	3	15	73	52-9/32	54-25/32
318	30	60	57-1/4	55-1/2	3	18	86	61-9/32	63-25/32
320	36	72	63-1/4	61-1/2	3	20	96	67-9/32	69-25/32
411	24	48	48-1/4	46-1/2	4	11	72	52-3/8	54-7/8
412	28	56	52-1/4	50-1/2	4	12	79	56-3/8	58-7/8
413	32	64	56-1/4	54-1/2	4	13	86	60-3/8	62-7/8
416	36	72	64-1/4	62-1/2	4	15	98	68-3/8	70-7/8
418	40	80	76-1/4	74-1/2	4	18	115	80-3/8	82-7/8
420	48	96	84-1/4	82-1/2	4	20	128	88-3/8	90-7/8
511	30	60	60-3/8	58-5/8	5	11	91	64-15/32	66-31/32
512	35	70	65-3/8	63-5/8	5	12	99	69-15/32	71-31/32
513	40	80	70-3/8	68-5/8	5	13	107	74-15/32	76-31/32
513	45	90	80-3/8	78-5/8	5	15	122	84-15/32	86-31/32
518	50	100	95-3/8	93-5/8	5	18	143	99-15/32	101-31/32
520	60	120	105-3/8	103-5/8	5	20	160	109-15/32	111-31/32
611	36	72	72-1/2	70-3/4	6	11	109	76-9/16	79-1/16
612	42	84	78-1/2	76-3/4	6	12	119	82-9/16	85-1/16
613	48	96	84-1/2	82-3/4	6	13	129	88-9/16	91-1/16
615	54	108	96-1/2	94-3/4	6	15	147	100-9/16	103-1/16
618	60	120	114-1/2	112-3/4	6	18	172	118-9/16	121-1/16
620	72	144	126-1/2	124-3/4	6	20	192	130-9/16	133-1/16

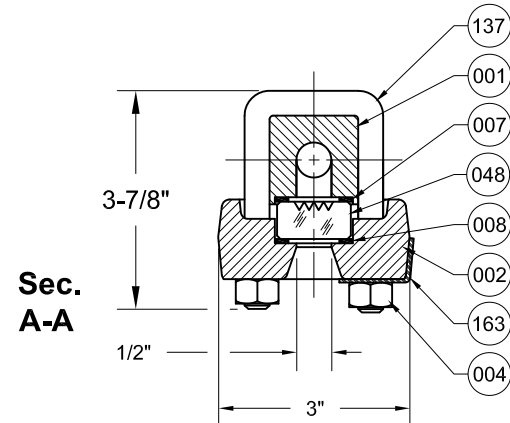
+1" for SW Gauge Connections

BILL OF MATERIALS					
* - Denotes an Optional, Non-Standard Material					
Item No.	Name of Part	Qty.	Material	Max. Temp. (°F)	Material Grade/Notes
001	Chamber	1	Carbon Steel		ASTM A696
			*316SS/316LSS		ASTM A511
007	Gasket	1/Sec.	Non-Asbestos Fiber	550	IFG5500
			*Graphite	572	SS Reinforced
			*PTFE	500	15% Glass Filled
048	Glass	1/Sec.	Tempered Boro.	572	
002	Retaining Cover	1/Sec.	Carbon Steel		ASTM A36
			*316SS		ASTM A511
004	Nuts	Var.	Carbon Steel		ASTM A194 2H
			*316SS		ASTM A194-8M
008	Glass Cushion	1/Sec.	Non-Asbestos Fiber	550	IFG5500
			*Graphite	572	SS Reinforced
137	U-bolts	Var.	Alloy Steel		ASTM A193 B7
			*316SS		ASTM A193-B8M
163	ID Tag	1	SS		

NOTES:

1. Mounting Bracket Included on Gauges >165 lbs. Inquire for Exact Placement Requirements.
2. Values For End Connected Gauges. Please Inquire for Side/Back Connections.
3. Ratings Limited to Glass, Gasket, and Valve Ratings
4. All Wetted Components Comply with NACE MR-01-75
5. 3/4" Connections are Recommended for Gauges >100 lbs.
6. Socketweld Connections are Not Compliant with B31.11 for Side/Back Connect and 3/4" End Connected Gauges. Inquire if Compliance is Needed

RATINGS ³			
Temp. (°F)	Steam (PSIG)	Non-Steam with Std. Gaskets (PSIG)	
		Carbon Steel	316SS
100	300	750	720
200	300	750	620
300	300	730	560
400	300	705	515
500	NR	665	480
550	NR	605	450



H12 Series Configuration Choices:

Reference the Series H12 Model Number Matrix on our Website or Inquire with our Sales Team

JOHN C ERNST LLC.		www.johnernst.com 21 Gail Ct. Sparta, N.J. USA	
Series H12 - Reflex Armored Level Gauge			
Sheet: 1 of 1	Drawn By: WAS	Tolerances, unless otherwise noted Dec.: ± Frac.: ± Ang.: ±	Size: B
Scale: NTS	Approved By: GEW	Dwg. No.: SC2.00H12.00.0.0	Rev.: --
Dim.: Inches	Date: 19-OCT-16		