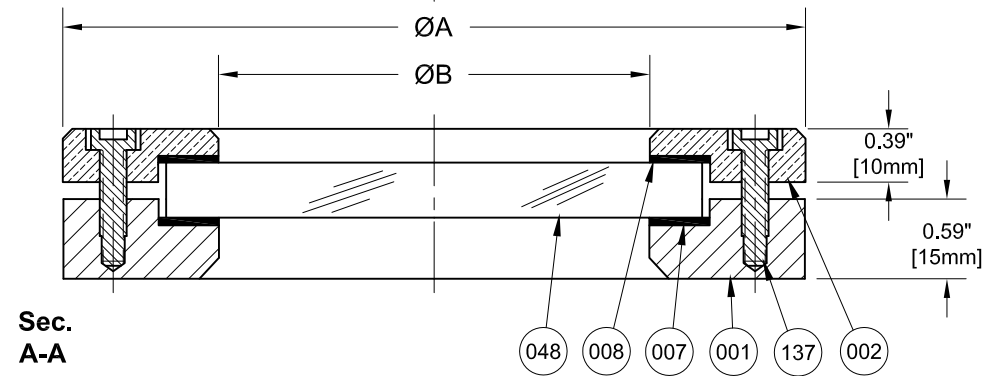
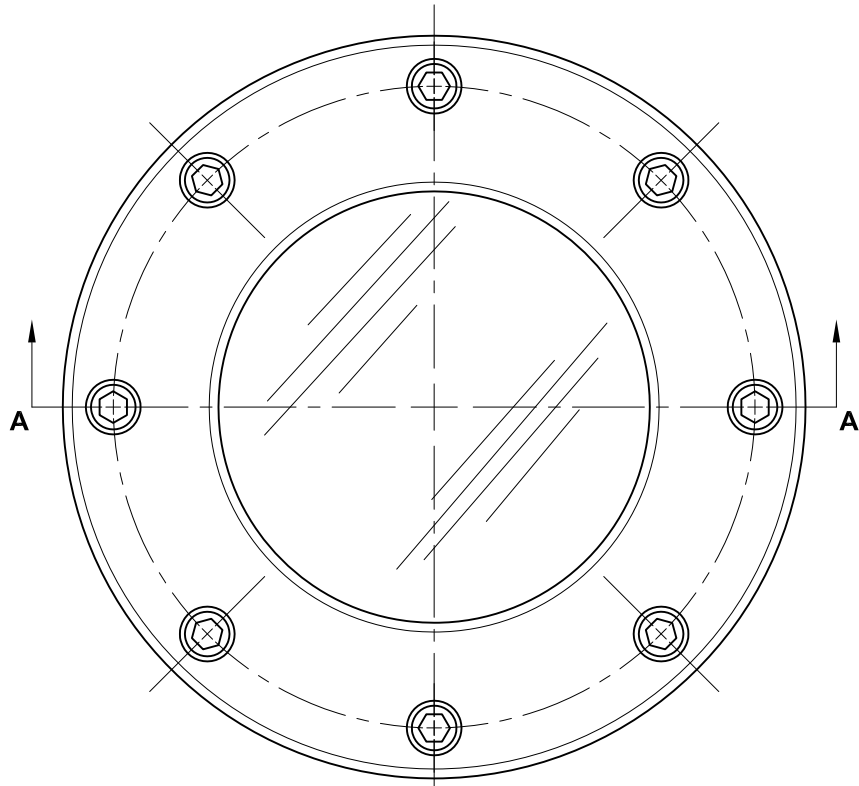


REVISIONS			
Rev.	Modification	Date	Done By



Sec. A-A

### BILL OF MATERIALS

\* - Denotes an Optional, Non-Standard Material

No.	Name of Part	Qty.	Material	Max. Temp. (°F)
001	Weld Pad	1	316LSS	
007	Gasket	1	Solid PTFE (Teflon®)	450
			*Neoprene	250
			*Gylon® 3504	500
			*EPDM	250
			*Viton®	350
			*Graphite	536
*009	Shield (Opt.)	1	*Mica V4	
048	Lens	1	Tempered Borosilicate	
002	Cover	1	316 Ti SS	
008	Cushion	1	Non-Asbestos Fiber	
137	Bolting	Var.	304SS	

### PRODUCT SPECIFICATIONS

Flange Size		A		B		# of Bolts	Weight		Rating @ 536°F	
In.	DN	In.	mm.	In.	mm.		lbs.	kg.	PSIG	kPa
2	50	5.51	140	3.15	80	4	5	2.3	15	103.4
3	80	6.50	165	3.94	100	8	6	2.7		
4	100	7.48	190	4.92	125	8	7	3.2		
5	125	8.46	215	5.91	150	8	9	4.1		
6	150	9.45	240	6.89	175	8	10	4.5		
8	200	11.42	290	8.86	225	8	12	5.4		

### W13 Series Configuration Choices:

Reference the Series W13 Model Number Matrix on our Website or Inquire with our Sales Team

Teflon® & Viton® is a Registered Trademark of the Chemours Company  
Gylon® is a Registered Trademark of Garlock Sealing Technologies

**JOHN C ERNST LLC.**

www.johnernst.com  
21 Gall Ct. Sparta, N.J. USA

Series W13 Weld Pad Sight Window Low Pressure

Sheet: 1 of 1	Drawn By: WAS	Tolerances, unless otherwise noted Dec.: ±    Frac.: ±    Ang.: ±	Size: A
Scale: NTS	Approved By: JCW		
Dim.: Var.	Date: 27-MAR-18	Dwg. No.: SC2.00W13.00.0.0 Rev 0	Rev.: --