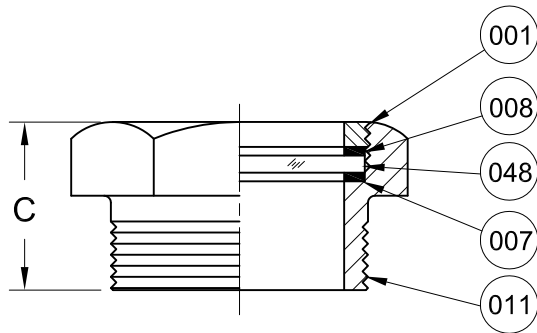
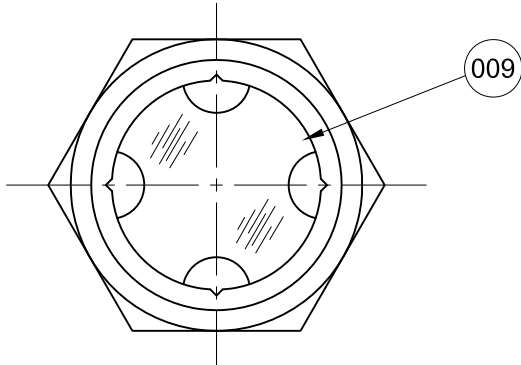
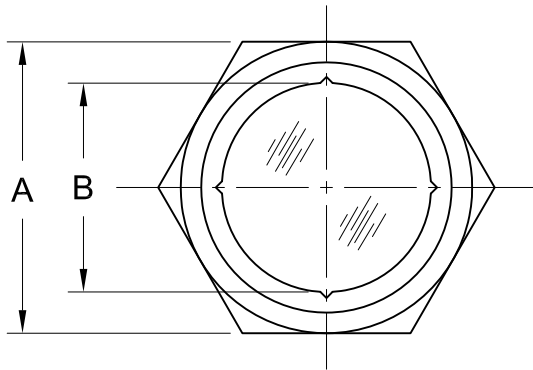


REVISIONS			
Rev.	Modification	Date	Done By



**W16 Series Configuration Choices:**

Reference the Series W16 Model Number Matrix on our Website or Inquire with our Sales Team

Viton® is a Registered Trademark of E.I. DuPont de Nemours Co. Inc.

BILL OF MATERIALS					
* - Denotes an Optional, Non-Standard Material					
Item No.	Name of Part	Qty.	Material	Max. Temp. (°F)	Material Grade/Notes
Wetted	011	Body	Brass		
	007	Gasket	Viton®	300	Fluorocarbon
			*EPDM	250	
			*Neoprene	250	Chloroprene
			*Non-Asbestos Fiber	300	
009	Reflector (Optional)	1	Aluminum		(White)
048	Lens	1	Annealed Borosilicate		
Non-Wet.	001	Retainer	Brass		
	008	Cushion	Non-Asbestos Fiber	300	

PRODUCT SPECIFICATIONS									
MNPT Size	A		B		C		Rating <sub>1</sub>	Weight	oz.
	In.	mm.	In.	mm.	In.	mm.			
1/4	5/8	15.9	9/32	7.1	7/8	22.2	100	1	1
3/8	7/8	22.2	15/32	11.9	29/32	23.0	100	2	2
1/2	1	25.4	19/32	15.1	31/32	24.6	90	2	2
3/4	1-1/8	28.6	11/16	17.5	1	25.4	80	3	3
1	1-3/8	34.9	15/16	23.8	1-1/8	28.6	60	4	4
1-1/4	1-7/8	47.6	1-1/4	31.8	1-17/32	38.9	35	6	6
1-1/2	2-1/8	54.0	1-1/2	38.1	1-1/4	31.8	25	8	8
2	2-3/8	60.3	1-17/32	38.9	1-5/16	33.3	25	20	20

**Notes:**

1. Ratings are Limited to Gasket & Glass Material

<b>JOHN C ERNST LLC.</b>			www.JOHNERNST.com	
			21 Gail Ct. Sparta, N.J. USA	
Series W16 Brass Male Threaded Sight Plug				
Sheet: 1 of 1	Drawn By: WAS	Tolerances, unless otherwise noted Dec.: ±    Frac.: ±    Ang.: ±		Size: A
Scale: NTS	Approved By: JCW			
Dim.: Var.	Date: 14-JUN-16	Dwg. No.: SC2.00W16.01.0.0		Rev.: --