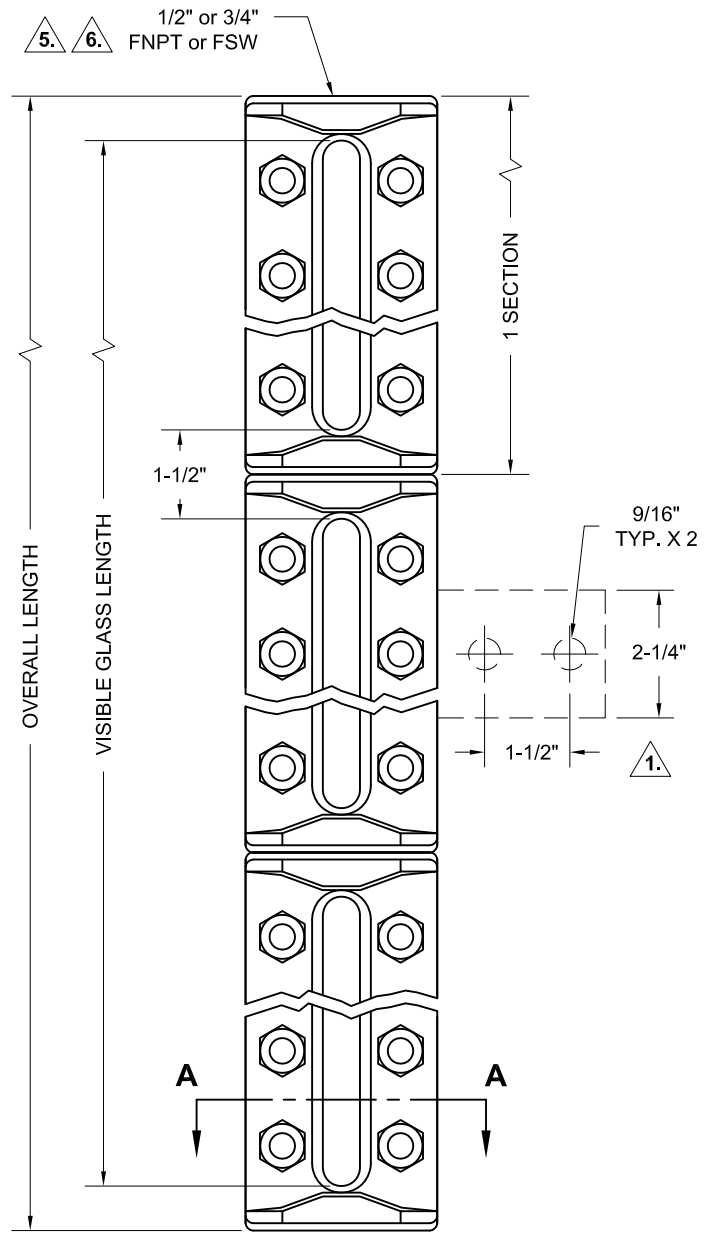


| REVISIONS | | | |
|-----------|--------------|------|---------|
| Rev. | Modification | Date | Done By |
| | | | |



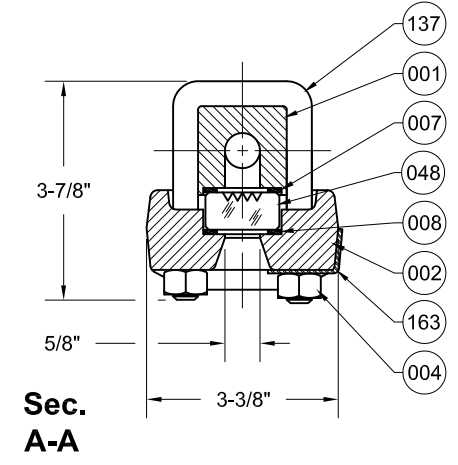
| PRODUCT SPECIFICATIONS | | | | | | | | | |
|------------------------|---------|------|----------------------|----------------------|--------------|------------|----------------------------|---|-------------------|
| Sections & Glass Size | U-Bolts | Nuts | Overall Length (in.) | Visible Length (in.) | No. of Sect. | Glass Size | Wgt. ^{1,5} (lbs.) | Minimum Vessel Centers Off Valves with NPT Gauge Connections ₂ | |
| | | | | | | | | With Rigid Valves | With Union Valves |
| 11 | 3 | 6 | 5-1/4 | 3-3/4 | | 1 | 9 | 9-3/8 | 11-7/8 |
| 12 | 3 | 6 | 6-1/4 | 4-3/4 | | 2 | 10 | 10-3/8 | 12-7/8 |
| 13 | 4 | 8 | 7-1/4 | 5-3/4 | | 3 | 12 | 11-3/8 | 13-7/8 |
| 14 | 5 | 10 | 8-1/4 | 6-3/4 | | 4 | 13 | 12-3/8 | 14-7/8 |
| 15 | 5 | 10 | 9-3/8 | 7-7/8 | 1 | 5 | 15 | 13-1/2 | 16 |
| 16 | 6 | 12 | 10-5/8 | 9-1/8 | | 6 | 17 | 14-3/4 | 17-1/4 |
| 17 | 7 | 14 | 11-3/4 | 10-1/4 | | 7 | 19 | 15-7/8 | 18-3/8 |
| 18 | 8 | 16 | 13-3/8 | 11-7/8 | | 8 | 21 | 17-1/2 | 20 |
| 19 | 8 | 16 | 14-1/8 | 12-5/8 | | 9 | 22 | 18-1/4 | 20-3/4 |
| 23 | 8 | 16 | 14-1/2 | 13 | | 3 | 23 | 18-5/8 | 21-1/8 |
| 24 | 10 | 20 | 16-1/2 | 15 | | 4 | 27 | 20-5/8 | 23-1/8 |
| 25 | 10 | 20 | 18-3/4 | 17-1/4 | | 5 | 29 | 22-7/8 | 25-3/8 |
| 26 | 12 | 24 | 21-1/4 | 19-3/4 | 2 | 6 | 34 | 25-3/8 | 27-7/8 |
| 27 | 14 | 28 | 23-1/2 | 22 | | 7 | 37 | 27-5/8 | 30-1/8 |
| 28 | 16 | 32 | 26-3/4 | 25-1/4 | | 8 | 42 | 30-7/8 | 33-3/8 |
| 29 | 16 | 32 | 28-1/4 | 26-3/4 | | 9 | 44 | 32-3/8 | 34-7/8 |
| 36 | 18 | 36 | 31-7/8 | 30-3/8 | | 6 | 50 | 36 | 38-1/2 |
| 37 | 21 | 42 | 35-1/4 | 33-3/4 | 3 | 7 | 56 | 39-3/8 | 41-7/8 |
| 38 | 24 | 48 | 40-1/8 | 38-5/8 | | 8 | 63 | 44-1/4 | 46-3/4 |
| 39 | 24 | 48 | 42-3/8 | 40-7/8 | | 9 | 66 | 46-1/2 | 49 |
| 47 | 28 | 56 | 47 | 45-1/2 | | 7 | 74 | 51-1/8 | 53-5/8 |
| 48 | 32 | 64 | 53-1/2 | 52 | 4 | 8 | 84 | 57-5/8 | 60-1/8 |
| 49 | 32 | 64 | 56-1/2 | 55 | | 9 | 88 | 60-5/8 | 63-1/8 |
| 57 | 35 | 70 | 58-3/4 | 57-1/4 | | 7 | 93 | 62-7/8 | 65-3/8 |
| 58 | 40 | 80 | 66-7/8 | 65-3/8 | 5 | 8 | 105 | 71 | 73-1/2 |
| 59 | 40 | 80 | 70-5/8 | 69-1/8 | | 9 | 111 | 74-3/4 | 77-1/4 |
| 68 | 48 | 96 | 80-1/4 | 78-3/4 | 6 | 8 | 126 | 84-3/8 | 86-7/8 |
| 69 | 48 | 96 | 84-3/4 | 83-1/4 | | 9 | 133 | 88-7/8 | 91-3/8 |
| 78 | 56 | 112 | 93-5/8 | 92-1/8 | | 8 | 147 | 97-3/4 | 100-1/4 |
| 79 | 56 | 112 | 98-7/8 | 97-3/8 | 7 | 9 | 155 | 103 | 105-1/2 |
| 88 | 64 | 128 | 107 | 105-1/2 | 8 | 8 | 169 | 111-1/8 | 113-5/8 |
| 89 | 64 | 128 | 113 | 111-1/2 | | 9 | 177 | 117-1/8 | 119-5/8 |
| 98 | 72 | 144 | 120-3/8 | 118-7/8 | 9 | 8 | 190 | 124-1/2 | 127 |
| 99 | 72 | 144 | 127-1/8 | 125-5/8 | | 9 | 199 | 131-1/4 | 133-3/4 |

+1" for SW Gauge Connections

| BILL OF MATERIALS | | | | | |
|--|-----------------|--------|--------------------|-----------------|-----------------------|
| * - Denotes an Optional, Non-Standard Material | | | | | |
| Item No. | Name of Part | Qty. | Material | Max. Temp. (°F) | Material Grade/Notes |
| 001 | Chamber | 1 | Carbon Steel | | ASTM A696 Gr.C / A105 |
| | | | *Low-Temp. Carbon | | ASTM A350-LF2 |
| | | | *316SS/316LSS | | ASTM A511 |
| 007 | Gasket | 1/Sec. | Non-Asbestos Fiber | 550 | IFG5500 |
| | | | *Graphite | 800 | SS Reinforced |
| | | | *PTFE | 500 | 25% Glass Filled |
| 048 | Glass | 1/Sec. | Tempered Boro. | 572 | |
| | | | *Aluminosilicate | 800 | |
| 002 | Retaining Cover | 1/Sec. | Carbon Steel | | ASTM A105 |
| | | | *Low-Temp. Carbon | | ASTM A350-LF2 |
| 004 | Nuts | Var. | *316SS | | ASTM A276 |
| | | | Carbon Steel | | ASTM A194 2H |
| 008 | Glass Cushion | 1/Sec. | Non-Asbestos Fiber | 550 | IFG5500 |
| | | | *Graphite | 800 | SS Reinforced |
| 137 | U-Bolts | Var. | Alloy Steel | | ASTM A193 B7 |
| 163 | ID Tag | 1 | *316SS | | ASTM A193-B8M |
| | | | SS | | |

- NOTES:**
- Welded Mounting Bracket included on gauges >165 lbs. Inquire for exact placement requirements
 - Values for end connected gauges. Please inquire for side/back connections
 - Ratings limited to glass, gasket, and valve ratings
 - All wetted components comply with NACE MR-01-75
 - 3/4" Connections are recommended for gauges >100 lbs.
 - Socketweld connections are not compliant with B31.11 for side/back connect and 3/4" End connected gauges. Inquire if compliance is needed

| RATINGS ₃ | | | | | | | | | |
|----------------------|---|---------|---------|---------|---------|---------|---------|---------|---------|
| Temp. (°F) | Non-Steam Pressure Range with Std. Gaskets (PSIG) | | | | | | | | |
| | Size #1 | Size #2 | Size #3 | Size #4 | Size #5 | Size #6 | Size #7 | Size #8 | Size #9 |
| 100 | 3270 | 3140 | 3000 | 2880 | 2750 | 2630 | 2510 | 2390 | 2250 |
| 200 | 3090 | 2970 | 2860 | 2740 | 2620 | 2500 | 2380 | 2260 | 2150 |
| 300 | 2900 | 2790 | 2670 | 2560 | 2450 | 2340 | 2220 | 2110 | 2000 |
| 400 | 2700 | 2600 | 2490 | 2380 | 2270 | 2170 | 2060 | 1950 | 1850 |
| 500 | 2510 | 2410 | 2305 | 2205 | 2100 | 2000 | 1900 | 1800 | 1700 |
| 550 | 2397 | 2300 | 2202 | 2107 | 2007 | 1910 | 1815 | 1720 | 1625 |
| Temp. (°F) | Non-Steam Pressure Range with Graphite & Aluminosilicate (PSIG) | | | | | | | | |
| | Size #1 | Size #2 | Size #3 | Size #4 | Size #5 | Size #6 | Size #7 | Size #8 | Size #9 |
| 600 | 2285 | 2190 | 2100 | 2010 | 1915 | 1820 | 1730 | 1640 | 1550 |
| 700 | 2080 | 1990 | 1910 | 1820 | 1740 | 1650 | 1570 | 1480 | 1400 |
| 800 | 1870 | 1790 | 1720 | 1640 | 1560 | 1480 | 1410 | 1330 | 1250 |
| Temp. (°F) | STEAM Pressure with Std. Gaskets (PSIG) | | | | | | | | |
| | Size #1 | Size #2 | Size #3 | Size #4 | Size #5 | Size #6 | Size #7 | Size #8 | Size #9 |
| 421 | 300 | 300 | 300 | 300 | 300 | 300 | 300 | 300 | 300 |



H13B Series Configuration Choices:
 Reference the Series H13B Model Number Matrix on our Website or Inquire with our Sales Team

JOHN C ERNST LLC.
 www.johnernst.com
 21 Gail Ct. Sparta, N.J. USA

Series H13B - Reflex Armored Level Gauge

| | | | | |
|----------------------------|------------------|--|--------------|-----------------|
| Sheet: 1 of 1 | Drawn By: WAS | Tolerances, unless otherwise noted Dec.: ± Frac.: ± Ang.: ± | Size: B | |
| Scale: NTS | Approved By: GEW | | Dim.: Inches | Date: 08-AUG-16 |
| Dwg. No.: SC2.0H13B.00.0.0 | | | | Rev.: -- |