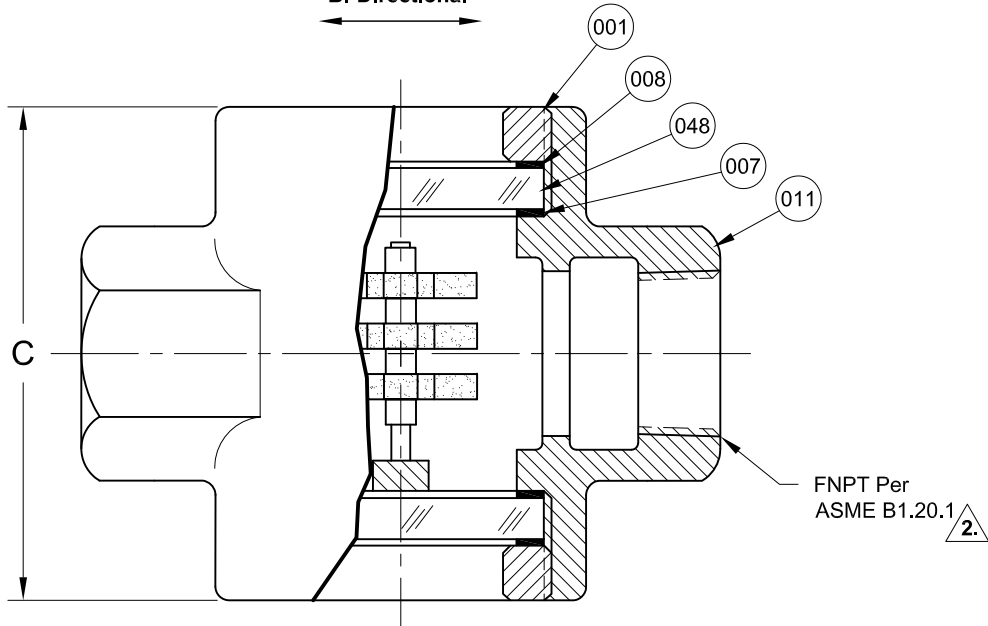
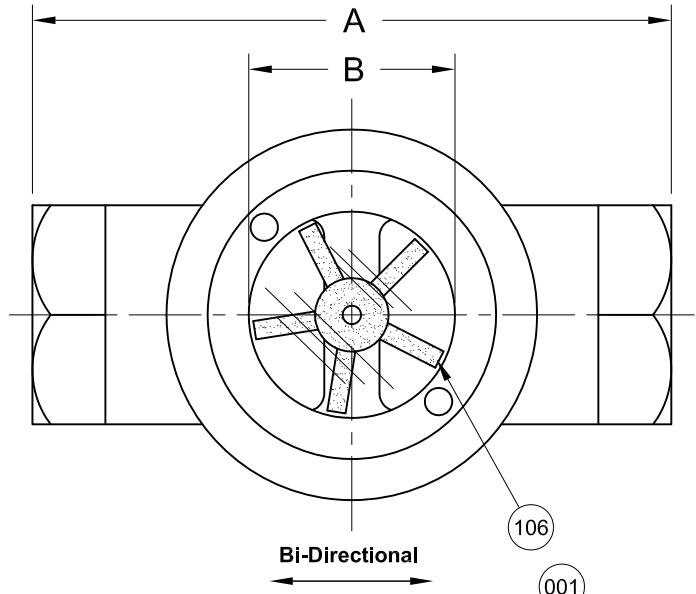


| REVISIONS | | | |
|-----------|------------------------------------|-----------|---------|
| Rev. | Modification | Date | Done By |
| 0 | Original | 3/31/2017 | WAS |
| A | Maximum & Minimum Flow Rates Added | 2/20/2018 | WAS |



BILL OF MATERIALS
* - Denotes an Optional, Non-Standard Material

| No. | Name of Part | Qty. | Material | Max. Temp. (°F) | Material Grade/Notes |
|-----|----------------|------|---|-----------------|--------------------------------|
| 011 | Body | 1 | Carbon Steel | | ASTM A-216 WCB |
| | | | Bronze | | ASTM B62 |
| | | | 316SS | | ASTM A-351 CF8M |
| 007 | Gasket | 2 | Neoprene | 250 | |
| | | | Gylon® | 500 | Gylon® 3545 |
| | | | *EPDM | 250 | |
| | | | *Viton® | 350 | |
| | | | *Graphite | 500 | |
| | | | *Non Asbestos Fiber | 500 | |
| | | | *Buna-N | 250 | |
| 048 | Lens | 2 | Annealed Borosilicate *Tempered Borosilicate | 450 500 | |
| 106 | Rotor Assembly | 1 | 316SS / PTFE | | |
| 008 | Cushion | 2 | Non-Asbestos | 500 | |
| 001 | Retainer | 2 | Brass | | ASTM B16 |
| | | | *316LSS | | ASTM A479 |
| 163 | Nameplate | 1 | SS | | Affixed to Unit (Not Pictured) |

Notes:

1. Only Carbon Steel & 316SS Bodies Conform to NACE MR0175 for Wetted NACE Service
2. Female Socket Weld Connections Available (Per ASME B16.11)

PRODUCT SPECIFICATIONS

| FNPT Size ₂ | A | | B | | C | | Weight | | 1st Rate of Indication GPM | Max Flow Rate GPM |
|------------------------|-------|-----|-------|-----|-------|-----|--------|-----|-------------------------------|----------------------|
| | In. | mm. | In. | mm. | In. | mm. | lbs. | kg. | | |
| 1/4 | 3 | 76 | 13/16 | 21 | 2 | 51 | 1-1/2 | 0.7 | 0.3 | 4.5 |
| 3/8 | 3 | 76 | 13/16 | 21 | 2 | 51 | 1-1/2 | 0.7 | 0.3 | 7.5 |
| 1/2 | 3-3/4 | 95 | 1-1/4 | 32 | 2-3/4 | 70 | 3 | 1.4 | 0.3 | 11.5 |
| 3/4 | 3-3/4 | 95 | 1-1/4 | 32 | 2-3/4 | 70 | 3 | 1.4 | 0.3 | 19 |
| 1 | 4-1/4 | 108 | 1-1/4 | 32 | 3-1/2 | 89 | 4 | 1.8 | 0.4 | 30 |
| 1-1/4 | 5-1/2 | 140 | 2 | 51 | 4-3/4 | 121 | 9 | 4.1 | 1.0 | 51 |
| 1-1/2 | 5-1/2 | 140 | 2 | 51 | 4-3/4 | 121 | 9 | 4.1 | 1.0 | 69 |
| 2 | 6-1/4 | 159 | 2 | 51 | 5 | 127 | 11 | 5.0 | 1.25 | 112 |

Rating: 150 PSIG @ 450°F with Appropriate Gaskets
(Bronze Body 400°F Max.)

JOHN C ERNST LLC. www.johnernst.com
21 Gail Ct. Sparta, N.J. USA

Series S12B Threaded Rotor Sight Flow Indicator

| | | | |
|---------------|------------------|--|------------|
| Sheet: 1 of 1 | Drawn By: WAS | Tolerances, unless otherwise noted Dec.: ± Frac.: ± Ang.: ± | Size: A |
| Scale: NTS | Approved By: GEW | | |
| Dim.: Var. | Date: 08-MAR-18 | Dwg. No.: SC2.0S12B.01.0.0 | Rev.: A |

S12B Series Configuration Choices:
Reference the Series S12B Model Number Matrix on our Website or Inquire with our Sales Team

Viton® is a Registered Trademark of The Chemours Company
Gylon® is a Registered Trademark of Garkock Sealing Technologies