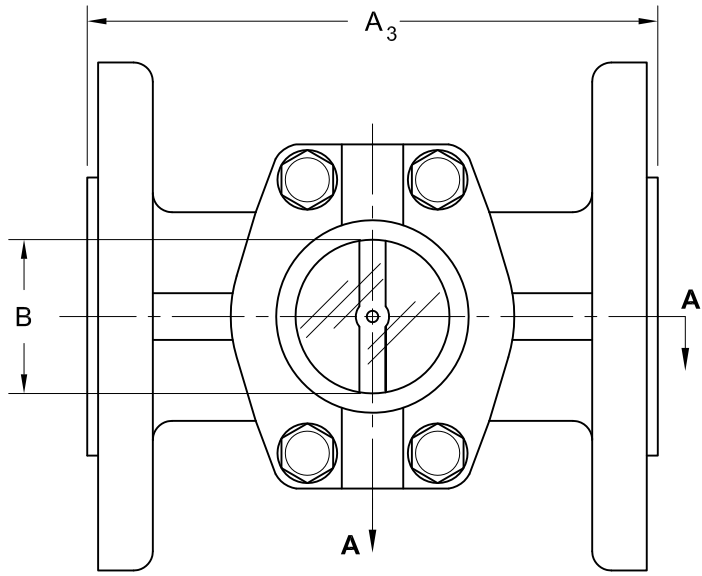
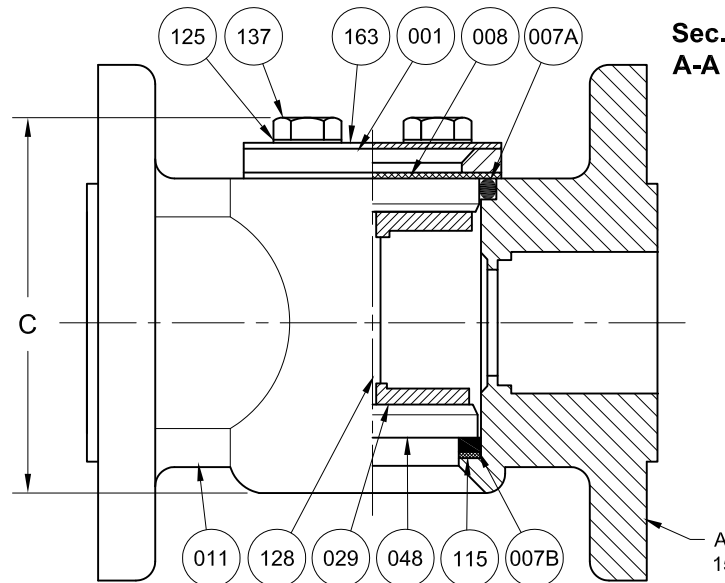


REVISIONS			
Rev.	Modification	Date	Done By



Bi-Directional Flow



Sec. A-A

RATINGS ₂	
Temp. (°F)	Pressure (PSIG)
-20 to 150	200
200	165
225	150
250	135
300	100
350	70
400	35

*Consult Sales for Alt. Ratings

BILL OF MATERIALS
* - Denotes an Optional, Non-Standard Material

No.	Name of Part	Qty.	Material	Max. Temp. (°F)	Material Grade/Notes
011	Body	1	Carbon Steel 316SS		ASTM A216-WCB ASTM A351-CF8M
007A 007B	Gasket	2	Neoprene Viton® *EPDM *PTFE *Kalrez® *Buna-N	250 400 250 400 400 212	
029	Bridge	2	316LSS		
048	Lens	2	Tempered Soda Lime		
128	Pin	1	316SS		
001	Retainer	1	Plated Steel		
008	Cushion	1	Non-Asbestos Fiber		
009	Outer Shield (Opt.)	1	Polycarbonate	200	(Not Pictured)
115	Spacer	1	PTFE	400	
125	Washers	4	Plated Steel		
137	Studs	4	Plated Steel		
163	Nameplate	1	Aluminum		

PRODUCT SPECIFICATIONS

Flange Size	A		B		C		Weight		Vacuum ₁ PSIG
	In.	mm.	In.	mm.	In.	mm.	lbs.	kg.	
1-1/2	6-1/2	165.1	2	50.8	4-3/8	111.1	10.6	4.81	-12.6
2	7	177.8	2	50.8	4-3/8	111.1	14.4	6.53	-12.6
2 ₃	7-7/8	200.0	2	50.8	4-3/8	111.1	14.7	6.67	-12.6

Notes:

- Vacuum Service Rating: 85.5% of Full Vacuum / 25.6" of Hg. / 2.1 PSIA
- Limited to Glass, Gasket, & Indicator Ratings
- Request Extended OAL Unit for 7-7/8" OAL

S13F Series Configuration Choices:

Reference the Series S13F Model Number Matrix on our Website or Inquire with our Sales Team

Kalrez® is a Registered Trademark of E.I. DuPont de Nemours Co. Inc.
Viton® is a Registered Trademark of the Chemours Company

JOHN C ERNST LLC.

www.johnernst.com
21 Gall Ct. Sparta, N.J. USA

Series S13F Plain SFIs 1-1/2" - 2" Flanged

Sheet: 1 of 1	Drawn By: WAS	Tolerances, unless otherwise noted Dec.: ± Frac.: ± Ang.: ±	Size: A
Scale: NTS	Approved By: JCW		Rev.: --
Dim.: Var.	Date: 28-DEC-16	Dwg. No.: SC2.0S13F.00.1.0	