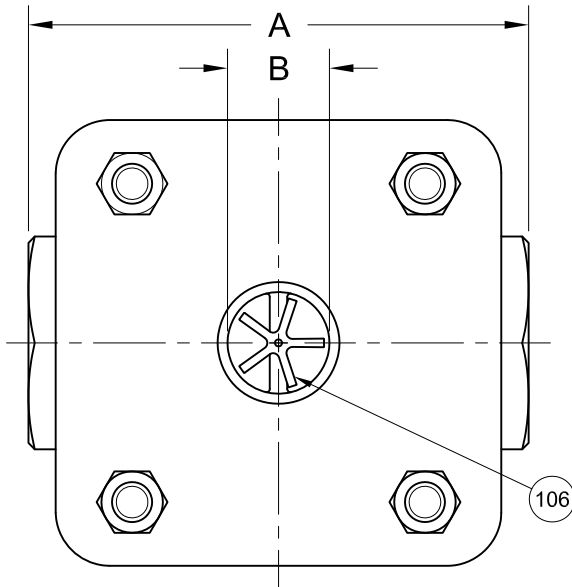
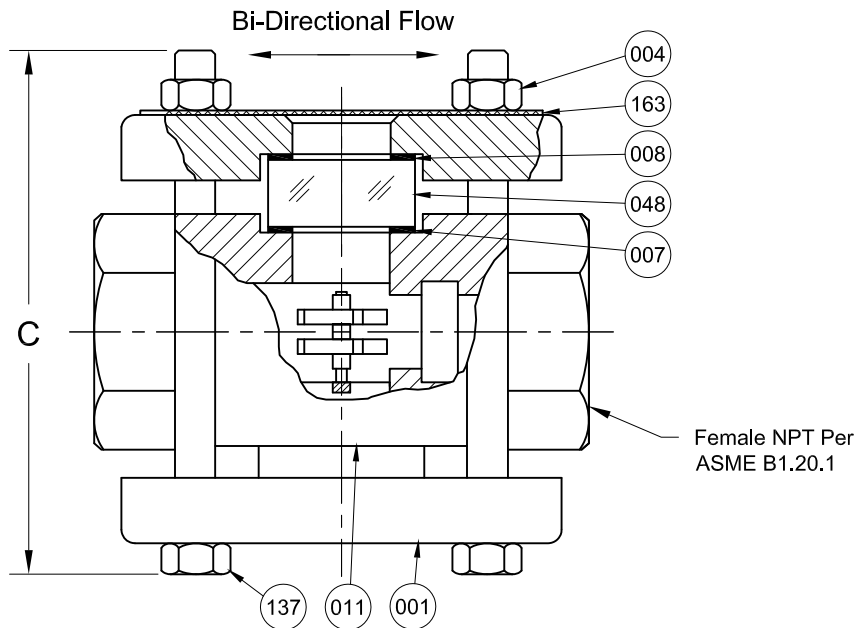


REVISIONS			
Rev.	Modification	Date	Done By
A	Updated Materials	10/10/2022	NPH



ASME CLASS 600 SERVICE PRESSURE/TEMP. RATINGS *Limited to Gasket & Glass Material		
Temp. (°F)	Pressure (PSIG)	
	CS	316SS
-20 to 100	1480	1440
150	1415	1340
200	1350	1240
250	1335	1180
300	1315	1120
350	1290	1075
400	1270	1030
450	1235	990
500	1200	955

\*Consult Sales for Higher & Lower Temps.



BILL OF MATERIALS * - Denotes an Optional, Non-Standard Material						
No.	Name of Part	Qty.	Material	Max. Temp. (°F)	Material Grade / Notes	
Wetted	011	1	Painted Carbon Steel		ASTM A216-WCB	
			316SS, 316LSS		ASTM A351-CF8M	
	007	2	Neoprene	250		
			Gylon®	500	Gylon® 3545	
			*Viton®	350		
			*Graphite	500		
048	Lens	2	Tempered Boro.	500		
106	Rotor Assembly	1	316SS / PTFE			
Non-Wetted	001	2	Electro-Galvanized Zinc Plated Carbon Steel		ASTM A216-WCB or ASTM A516 GR.70	
			*316SS			
	004	Nut	4	Yellow Zinc Plated Steel		ASTM A194-2H
				*316SS		
008	Cushion	2	Non-Asbestos	500	IFG-5500	
137	Stud	4	Yellow Zinc Plated Steel		ASTM A354-BD	
			*316SS			
163	Name Plate	1	SS			

PRODUCT SPECIFICATIONS								
FNPT Size	A		B		C <sub>1</sub>		Weight	
	In.	mm.	In.	mm.	In.	mm.	lbs.	kg.
1/4	3-3/4	95	13/16	21	4-1/4	108	7.2	3.3
3/8	3-3/4	95	13/16	21	4-1/4	108	7.2	3.3
1/2	4-1/2	114	1-1/16	27	5	127	13.2	6.0
3/4	4-1/2	114	1-1/16	27	5	127	13.2	6.0
1	4-7/8	124	1-1/4	32	5-1/2	140	14.4	6.5
1-1/4	6	152	2	51	7-1/2	191	24.0	10.9
1-1/2	6	152	2	51	7-1/2	191	24.0	10.9
2	6	152	2	51	7-1/2	191	24.0	10.9

**KEY NOTES:**

- Standard Bolt Length Shown In "C" Dimension (±1/8")
- Dual Window & Fused Glass Options Available by Request
- In Accordance with NACE MR-01-75 & ISO15156-1 for Wetted Materials

**S16T Series Configuration Choices:**

Reference the Series S16T Model Number Matrix on our Website or Inquire with our Sales Team

Gylon® is a Registered Trademark of Garlock Sealing Technologies  
Viton® is a Registered Trademark of the Chemours Company

<b>JOHN C ERNST LLC.</b>		www.johnernst.com 21 Gail Ct. Sparta, N.J. USA	
Series S16T Class 600# Female Threaded Rotor SFI - Type B			
Sheet: 1 of 1	Drawn By: WAS	Tolerances, unless otherwise noted Dec.: ±    Frac.: ±    Ang.: ±	Size: A
Scale: NTS	Approved By: GEW		
Dim.: Var.	Date: 06-MAR-18	Dwg. No.: SC2.0S16T.01.0.0	Rev.: A