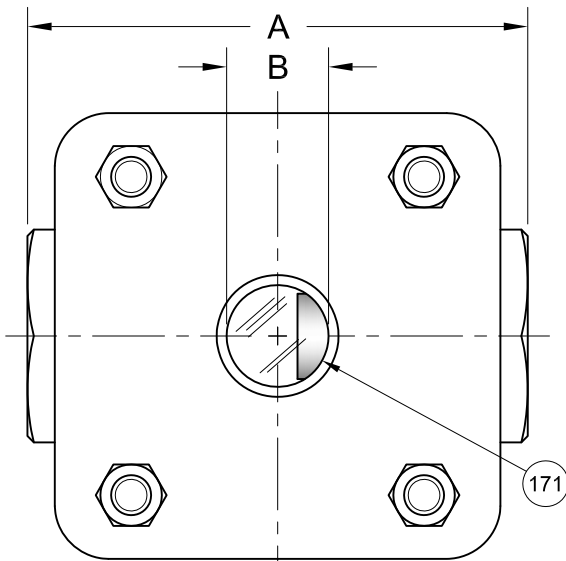


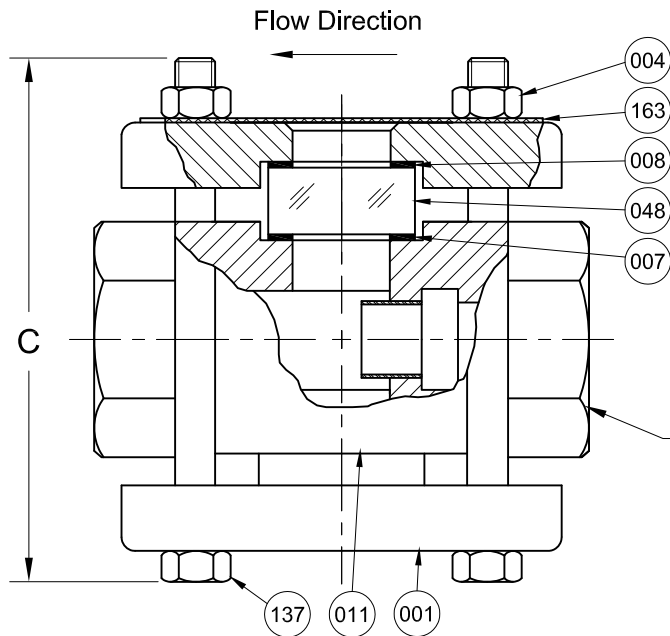
REVISIONS			
Rev.	Modification	Date	Done By
A	Updated Materials	10/10/2022	NPH



**ASME CLASS 600 SERVICE PRESSURE/TEMP. RATINGS**  
\*Limited to Gasket & Glass Material

Temp. (°F)	Pressure (PSIG)	
	CS	316SS
-20 to 100	1480	1440
150	1415	1340
200	1350	1240
250	1335	1180
300	1315	1120
350	1290	1075
400	1270	1030
450	1235	990
500	1200	955

\*Consult Sales for Higher & Lower Temps.



**BILL OF MATERIALS**  
\* - Denotes an Optional, Non-Standard Material

No.	Name of Part	Qty.	Material	Max. Temp. (°F)	Material Grade / Notes
011	Body	1	Painted Carbon Steel		ASTM A216-WCB
			316SS		ASTM A351-CF8M
007	Gasket	2	Neoprene	250	
			Gylon®	500	Gylon® 3545
			*Viton®	350	
			*Graphite	500	
			*Non Asbestos	500	IFG-5500
			Tempered Boro.	500	
048	Lens	2	316SS		
171	Drip Tube	1	316SS		
001	Retainer	2	Electro-Galvanized Zinc Plated Carbon Steel		ASTM A216-WCB or ASTM A516 GR.70
			*316SS		
			Yellow Zinc Plated Steel		ASTM A194-2H
			*316SS		
			Non-Asbestos	500	IFG-5500
004	Nut	4	Yellow Zinc Plated Steel		ASTM A354-BD
008	Cushion	2	Non-Asbestos	500	IFG-5500
			*316SS		
137	Stud	4	Yellow Zinc Plated Steel		ASTM A354-BD
			*316SS		
163	Name Plate	1	SS		

**PRODUCT SPECIFICATIONS**

FNPT Size	A		B		C <sub>1</sub>		Weight	
	In.	mm.	In.	mm.	In.	mm.	lbs.	kg.
1/4	3-3/4	95	13/16	21	4-1/4	108	7.2	3.3
3/8	3-3/4	95	13/16	21	4-1/4	108	7.2	3.3
1/2	4-1/2	114	1-1/16	27	5	127	13.2	6.0
3/4	4-1/2	114	1-1/16	27	5	127	13.2	6.0
1	4-7/8	124	1-1/4	32	5-1/2	140	14.4	6.5
1-1/4	6	152	2	51	7-1/2	191	24.0	10.9
1-1/2	6	152	2	51	7-1/2	191	24.0	10.9
2	6	152	2	51	7-1/2	191	24.0	10.9

**KEY NOTES:**

- Standard Bolt Length Shown in "C" Dimension (±1/8")
- Dual Window & Fused Glass Options Available by Request
- In Accordance with NACE MR-01-75 & ISO15156-1 for Wetted Materials

**S16T Series Configuration Choices:**

Reference the Series S16T Model Number Matrix on our Website or Inquire with our Sales Team

Gylon® is a Registered Trademark of Garlock Sealing Technologies  
Viton® is a Registered Trademark of the Chemours Company

<b>JOHN C ERNST LLC.</b>		www.johnernst.com	
		21 Gail Ct. Sparta, N.J. USA	
Series S16T Class 600# Female Threaded Drip Tube SFI - Type B			
Sheet: 1 of 1	Drawn By: WAS	Tolerances, unless otherwise noted Dec.: ±    Frac.: ±    Ang.: ±	
Scale: NTS	Approved By: GEW		
Dim.: Var.	Date: 06-MAR-18	Dwg. No.: SC2.0S16T.05.0.0	Rev.: A