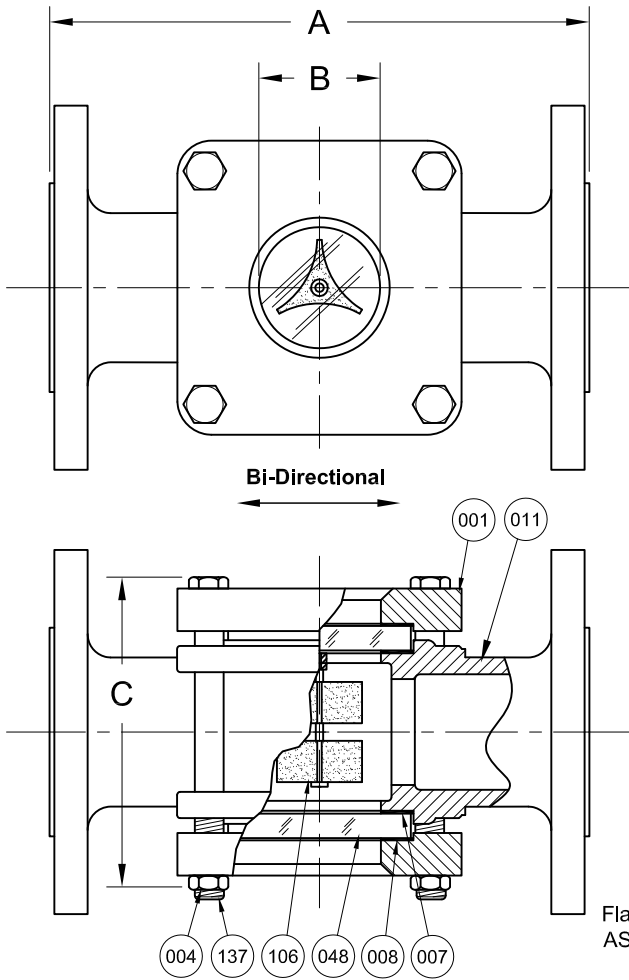


REVISIONS			
Rev.	Modification	Date	Done By
0	Original	9/9/2016	WAS
A	Added Min. & Max. Indicator Flow Rate	2/16/2018	WAS



BILL OF MATERIALS
* - Denotes an Optional, Non-Standard Material

No.	Name of Part	Qty.	Material	Max. Temp. (°F)	Material Grade
011	Body	1	Carbon Steel		ASTM A-216 WCB
			316SS		ASTM A-351 CF8M
007	Gasket	2	Neoprene	250	
			Gylon®	500	Gylon® 3504
			*EPDM	250	
			*Viton®	350	
			*Graphite	500	
			*Non Asbestos	500	Klinger C-4400
048	Lens	2	Tempered Boro.	500	
106	Rotor Assembly	1	PTFE/316SS	500	
008	Cushion	2	Non-Asbestos	500	Klinger C-4400
001	Retainer ₁	2	Steel		ASTM A-216 WCB
			316SS		ASTM A-351 CF8M
137	Stud	4	Plated Steel		SAE Gr. 5
			*316SS		ASTM A193-B8M
004	Nut	4	Plated Steel		SAE Gr. 5
			*316SS		ASTM A194-8M

- KEY NOTES:**
- Retainers & Body are the Same Material
 - For NACE Compliance, Please Inquire

PRODUCT SPECIFICATIONS

Flange Size	A		B		C		Weight		Rating	1st Rate of Indication	Max. Flow
	In.	mm.	In.	mm.	In.	mm.	lbs.	kg.	PSIG	GPM	GPM
8	16-1/8	410	8-1/4	210	16-7/8	429	230	104.3	150	15.8	1122

***8" Units are 150 PSIG Max**

S14FC Series Configuration Choices:

Reference the Series S14FC Model Number Matrix on our Website or Inquire with our Sales Team

Gylon® is a Registered Trademark of Garlock Sealing Technologies
Viton® is a Registered Trademark of the Chemours Company

JOHN C ERNST LLC.		www.johnernst.com 21 Gail Ct. Sparta, N.J. USA	
Series S14FC Sight Flow Indicator - Rotor 150# Flanged			
Sheet 1 of 1	Drawn By WAS	Tolerances, unless otherwise noted Dec.: ± Frac.: ± Ang.: ±	
Scale: NTS	Approved By: GEW	Size: A	
Date: 16-FEB-18	Dwg. No.: SC2.S14FC.01.1.0		Rev.: A