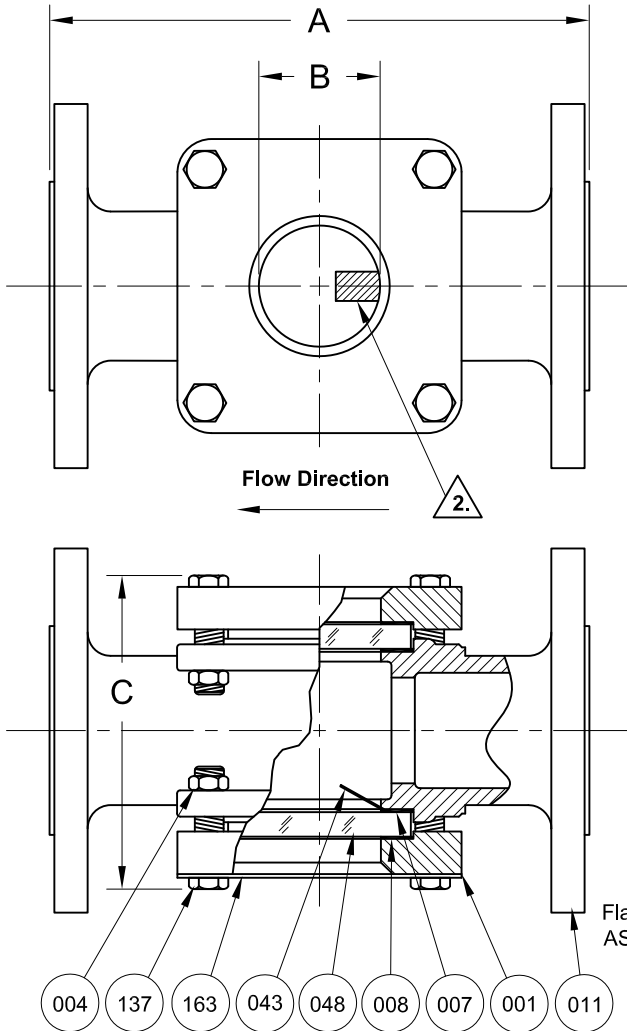


REVISIONS			
Rev.	Modification	Date	Done By
0	Original	6/20/2016	WAS
A	8" Unit Removed for Separate Drawing	9/9/2016	WAS
B	Added Note on Nuts, and Nameplate Information, NACE Note	2/3/2017	WAS



**ASME CLASS 150 SERVICE PRESSURE/TEMP. RATINGS**  
\*Limited to Gasket & Glass Material

Temp. (°F)	Pressure (PSIG)	
	CS	316SS
-20 to 100	285	275
150	270	255
200	260	235
250	245	225
300	230	215
350	215	205
400	200	195
450	185	180

\*Consult Sales for Higher & Lower Temps.

BILL OF MATERIALS					
* - Denotes an Optional, Non-Standard Material					
No.	Name of Part	Qty.	Material	Max. Temp. (°F)	Material Grade
011	Body	1	Carbon Steel		ASTM A-216 WCB
			316SS		ASTM A-351 CF8M
007	Gasket	2	Neoprene	250	
			Gylon®	450	Gylon® 3504
			*EPDM	250	
			*Viton®	350	
			*Graphite	450	
			*Non Asbestos	450	Klinger C-4400
			*Buna-N	250	
048	Lens	2	Tempered Boro.	450	
043	Flutter	1	PTFE	450	
008	Cushion	2	Non-Asbestos	450	Klinger C-4400
001	Retainer <sub>1</sub>	2	Steel		ASTM A-216 WCB
			316SS		ASTM A-351 CF8M
137	Stud	8	Plated Steel		SAE Gr. 5
			*316SS		ASTM A193-B8M
004	Nut <sub>3</sub>	8	Plated Steel		SAE Gr. 5
			*316SS		ASTM A194-8M
163	Nameplate	1	SS		

**Notes:**

- Retainers & Body are the Same Material
- First Moment of Indication is Unavailable for this Unit
- For 4" & 6" Sizes, Studs Thread Directly to Body (No Nuts)
- For NACE Compliance, Please Inquire

PRODUCT SPECIFICATIONS								
Flange Size	A		B		C		Weight	
	In.	mm.	In.	mm.	In.	mm.	lbs.	kg.
1/2 & 3/4	4-5/8	117	1-1/4	32	4-3/16	106	6	2.7
1	5-5/8	143	1-1/4	32	4-1/8	105	11	5.0
1-1/2	6-1/2	165	1-3/4	44	5-3/8	137	17	7.7
2	7-7/8	200	2	51	6-1/8	156	27	12.2
3	9-3/8	238	3-3/16	81	7-3/4	197	56	25.4
4 <sub>3</sub>	11	279	4-3/8	111	10-5/8	270	75	34.0
6 <sub>3</sub>	14-1/4	362	6-7/8	175	12-3/4	324	150	68.0

**S14FC Series Configuration Choices:**

Reference the Series S14FC Model Number Matrix on our Website or Inquire with our Sales Team

Gylon® is a Registered Trademark of Garlock Sealing Technologies  
Viton® is a Registered Trademark of The Chemours Company

<b>JOHN C ERNST LLC.</b>		www.JOHNERNST.com 21 Gail Ct. Sparta, N.J. USA	
Series S14FC Sight Flow Indicator - Flutter 150# Flanged			
Sheet 1 of 1	Drawn By WAS	Tolerances, unless otherwise noted	
Scale: NTS	Approved By: JCW	Dec.: ±	Frac.: ±
Date: 03-FEB-17	Dwg. No.: SC2.S14FC.03.0.0		Size: A
			Rev. B